

POTOMAC JOB CORPS CENTER
FIRE ALARMS - SITE VISIT MINUTES
ADDENDUM 001 – Questions & Answers, Floor Plans
January 7, 2019



Quote deadline has been extended to January 23, 2019 at 2pm.

QUESTIONS and ANSWERS

Question # 1

How will any necessary permits be applied for?

Answer # 1

Per the SOW, the awarded vendor must apply for any required permits from the DC government and any other jurisdiction having authority.

Question # 2

How does Acceptance of Work, differ from Inspection of Work per the RFQ?

Answer # 2

Substantial completion of the work is defined herein as the point at which the work is complete in all respects except for a few minor items which are to be listed on the contractor's punch list. With the issuance of a substantial completion certificate executed by the center and the contractor, the center will occupy/take possession of the work. Prior to the issuance of an executed substantial completion certificate the contractor shall have had all tests completed, witnessed and approved by the center's authorized representative. The provision of all required training, operating and maintenance manuals and other such requirements specified in this Scope of Work shall be a prerequisite to the contractor's notification requesting a substantial completion walk-through. Final inspection occurs once the substantial completion punch list has been corrected. A final walkthrough occurs with both PJCC personnel and DOL's engineering Project Manager.

Question # 3

Do we submit specs to both the DOL engineering contractor and DC government?

Answer # 3

Specifications must be submitted to PJCC, who will in turn route them to the appropriate entities, except where they may be part of a permit application, in which case the awarded vendor would be responsible for submitting them to the Authority Having Jurisdiction (AHJ).

Question # 4

Do we bring the fire alarm systems up to code?

Answer # 4

The intent of these deficiencies is to bring the systems up to compliant operation. Where called for in the requirements (i.e., Building 50), awarded contractor should investigate all fire alarm components and wiring and complete the installation to bring the system up to full function and compliance in all aspects. If the contractor identifies any deficiencies not written in the SOW they should include these as additional recommended services in their proposals, separated from their responses and pricing for the specific requirements defined in the RFQ

Question # 5

Can we get a copy of the official floor plans?

Answer # 5

Yes, we will provide a copy of the official floor plans for each building listed in the SOW.

Question # 6

Are the elevator shaft/machine room detectors in building 50 part of this scope?

Answer # 6

Yes

POTOMAC JOB CORPS CENTER
FIRE ALARMS - SITE VISIT MINUTES
ADDENDUM 001 – Questions & Answers, Floor Plans
January 7, 2019



Question # 7

Do we need to install an annunciator in Building 50?

Answer # 7

Yes, either relocate the existing annunciator panel or replace it with a new new panel in the building entrance lobby.

Question # 8

The requirement for the gymnasium calls for pull stations and annunciator horns to be provided with protection such as cage covers. There are no approved production cage covers for the large annunciator horns on the gym walls. Should the horns be replaced to fit into smaller, approved production cage covers?

Answer # 8

Per the deficiency text, confirmed with the DOL engineering contractor:

“Provide wire guards listed for the use for three pull stations, four exit signs, two emergency light fixtures, three fire alarm horn-strobes and one remote annunciator located in the gymnasium. The wire guards should be adequately rigid cages, mounted to the wall structure, and should not block operation of the pull stations or testing of the emergency and exit lighting”

Only the pull stations, horn-strobes, and remote annunciator in the building must be protected by cages or guards. The large wall-mounted horns do not require the protective cages or guards.

Question # 9

Will you compare and clarify building 50 and 60 deficiencies details?

Answer # 9

We have confirmed with the DOL engineering contractor that the deficiencies written for Building 60 actually apply to Building 50. All references to Building 60 in the RFQ should be interpreted to refer to Building 50.

Question # 10

Do we replace the non-working bell in building 50?

Answer # 10

Yes, remove and replace the nonworking bell with an operable bell.

Question # 11

What is the occupancy classification and occupant load for Building 50?

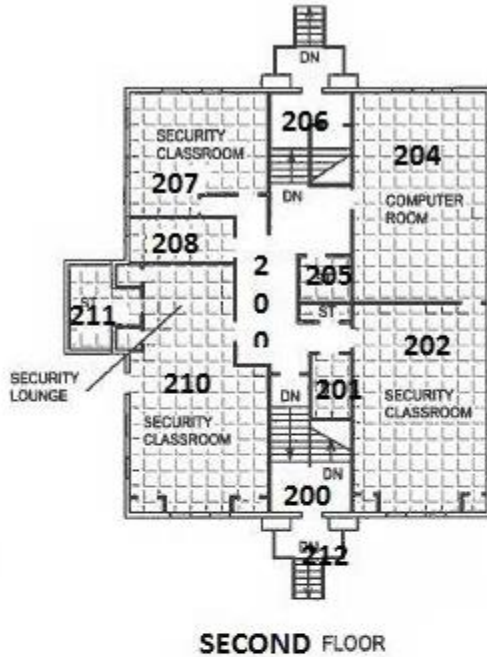
Answer # 11

For Building 50, the occupancy is Class B. Per the DOL engineering contractor, the occupancy load is calculated at 90 persons per floor, or 180 total persons for the building.



POTOMAC JOB CORPS CENTER
FIRE ALARMS - SITE VISIT MINUTES
ADDENDUM 001 – Questions & Answers, Floor Plans
January 7, 2019

FLOOR PLANS FOR BUILDINGS 11, 43, 50



JOHN ADAMS HALL
BUILDING 11

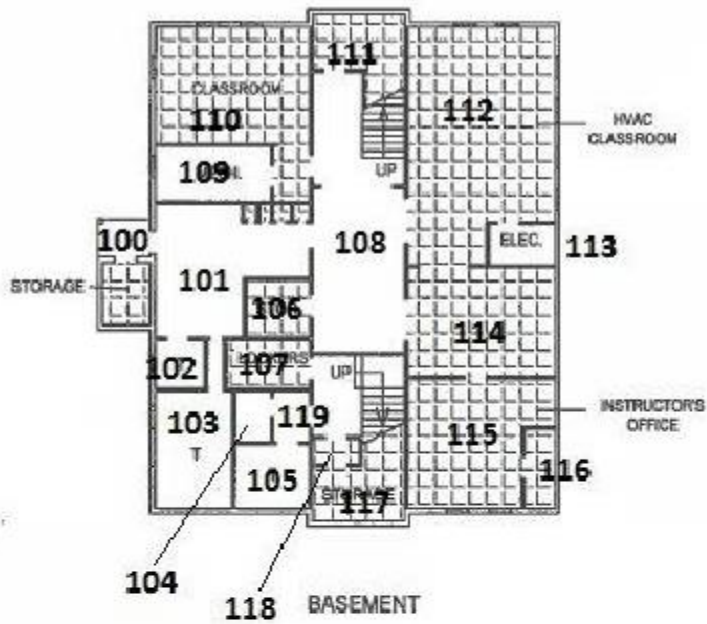
VOCATION/THEORY

POTOMAC JOB CORPS CENTER
D. C. VILLAGE, WASHINGTON D.C.





POTOMAC JOB CORPS CENTER
FIRE ALARMS - SITE VISIT MINUTES
ADDENDUM 001 – Questions & Answers, Floor Plans
January 7, 2019



JOHN ADAMS HALL
BUILDING 11

 VOCATION/THEORY

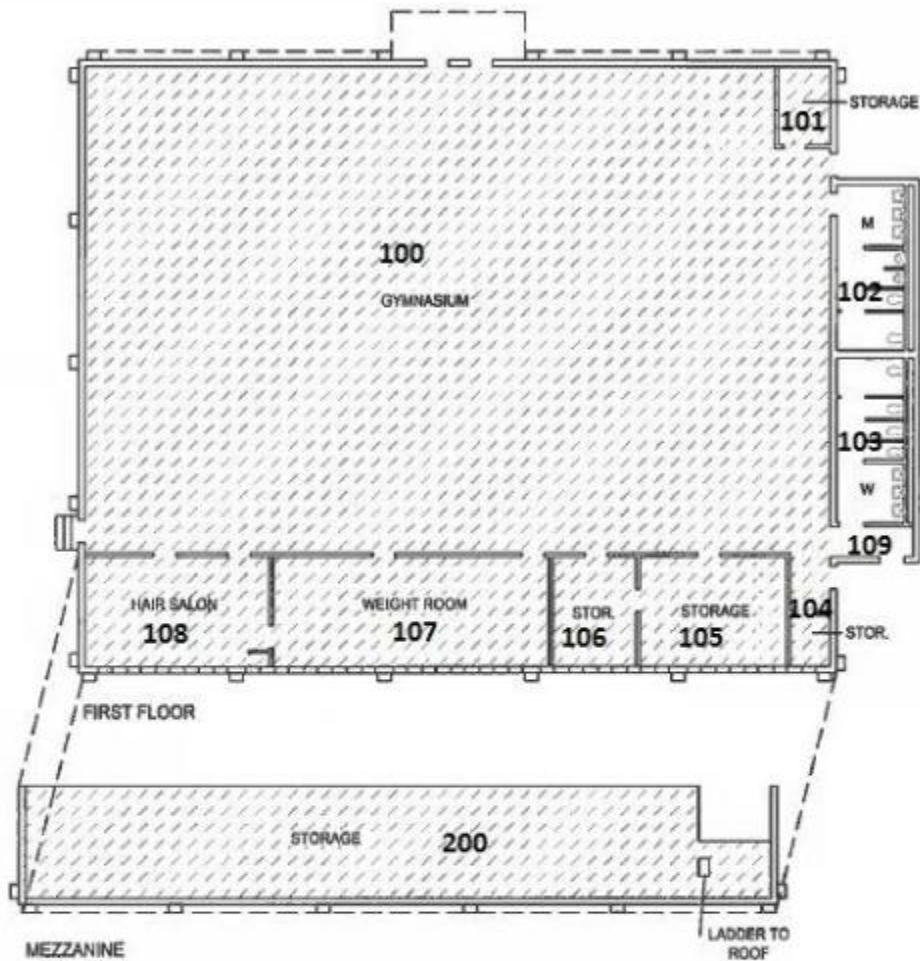
POTOMAC JOB CORPS CENTER
D. C. VILLAGE, WASHINGTON D.C.

0 10' 20' 40'






POTOMAC JOB CORPS CENTER
FIRE ALARMS - SITE VISIT MINUTES
ADDENDUM 001 – Questions & Answers, Floor Plans
January 7, 2019



POOL 300

BASKETBALL COURT 400

MADISON HALL
BUILDING 43

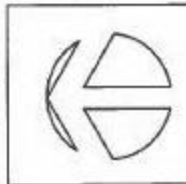
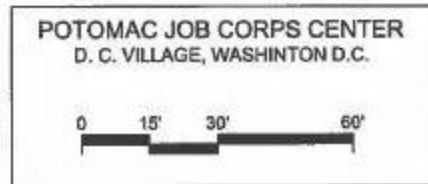
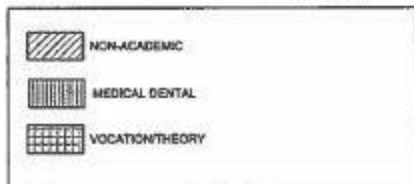
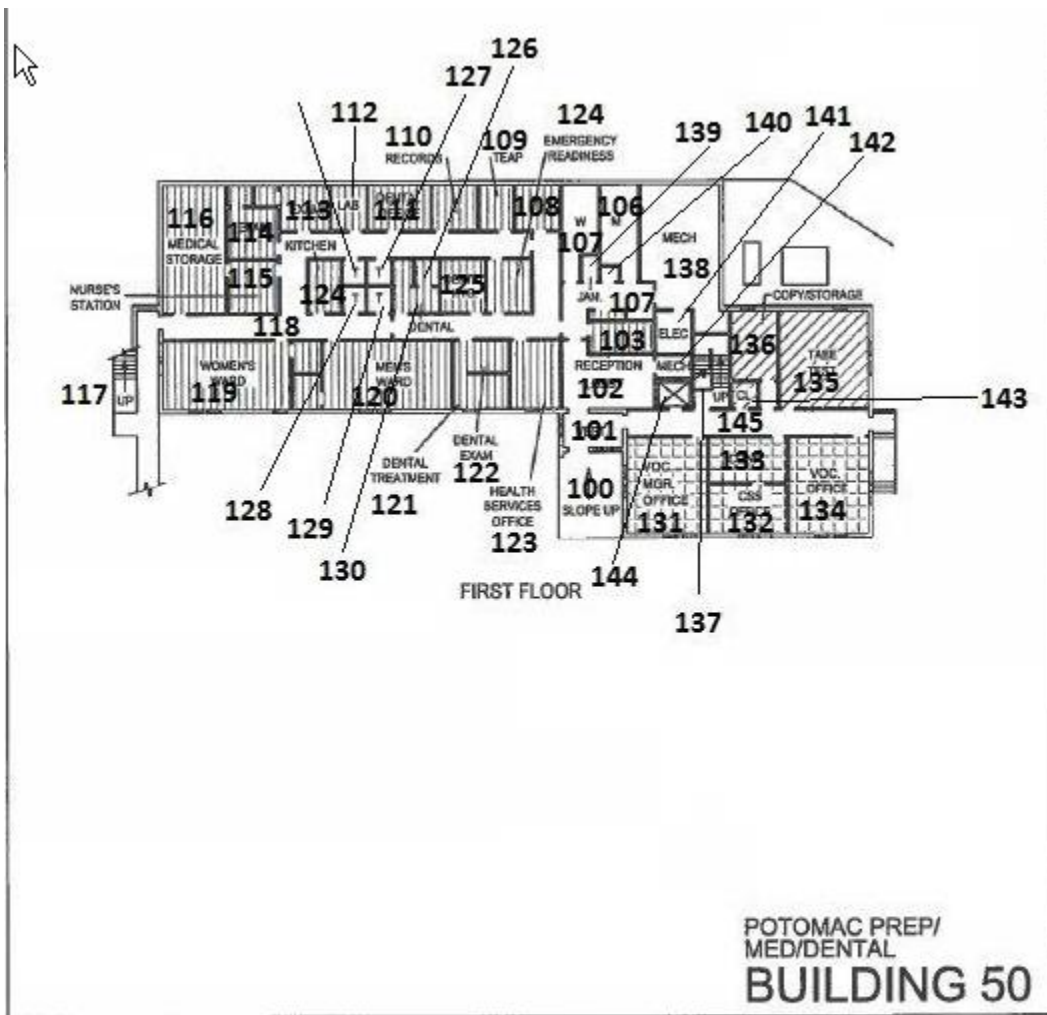
 RECREATION

POTOMAC JOB CORPS CENTER
D. C. VILLAGE, WASHINGTON D.C.



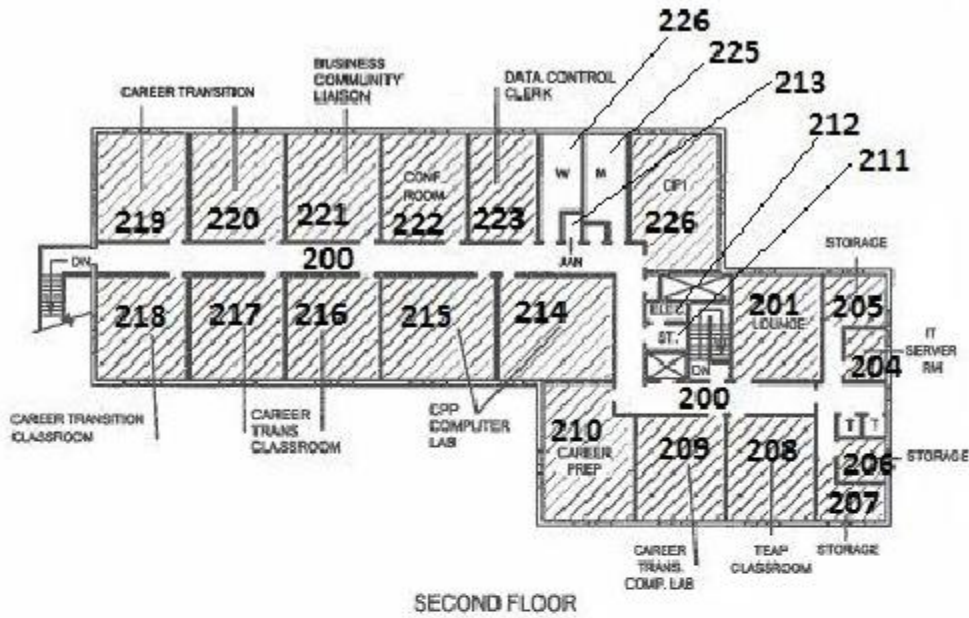


POTOMAC JOB CORPS CENTER
FIRE ALARMS - SITE VISIT MINUTES
ADDENDUM 001 – Questions & Answers, Floor Plans
January 7, 2019

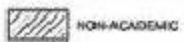




POTOMAC JOB CORPS CENTER
FIRE ALARMS - SITE VISIT MINUTES
ADDENDUM 001 – Questions & Answers, Floor Plans
January 7, 2019



POTOMAC PREP/
MED/DENTAL
BUILDING 50



POTOMAC JOB CORPS CENTER
D. C. VILLAGE, WASHINGTON D.C.

